

WELCOME

What Every Parent Should
Know About the New
F.A.S.T. Assessments in
ELA and Math

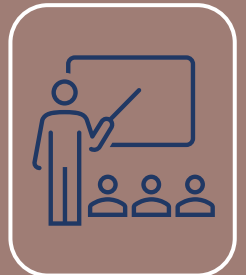


John I. Smith K-8 Center

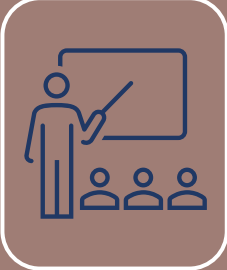
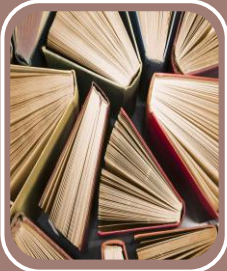
What is F.A.S.T.?

FAST Florida Assessment of Student Thinking (FAST) ... is a new **adopted state education standards system** that changed the way testing is done in our schools. All Florida schools teach the Florida Standards. The FAST Assessments provide parents and families, teachers, policy makers, and the general public with information regarding how well students are learning the Florida Standards.

<https://www.fldoe.org/accountability/assessments/k-12-student-assessment/best/>



- ✓ The Grade 6-8 Florida Assessment of Student Thinking (F.A.S.T.) Assessment is aligned to the NEW B.E.S.T. standards in **BOTH** Reading and Math.
- ✓ New Reading and Math books have been aligned to these standards and students have been gaining more understanding and knowledge of NEW terminology and question styles. For Reading, through their bi-weekly FRESH READS in class (BOTH paper/pencil and online).
- ✓ The F.A.S.T. Assessment is computer adaptive- which means questions will become harder as students successfully answer questions. And, become easier, if questions are answered incorrectly. This will result in higher or lower levels.
- ✓ Levels 1-5 will be reported after every F.A.S.T. assessment is completed. Teachers will notify you of your child's level, as soon as we have access to the reports.
- ✓ Results for the FINAL F.A.S.T. Assessment are expected to arrive before the end of the school year.



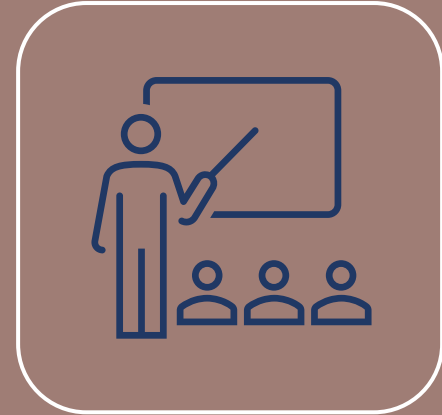
Tests Based on Standards

These rigorous standards help Florida students succeed. The Florida Standards Assessments (FAST) measure student mastery of the Florida Language Arts Standards through a variety of item types.



Why Florida Standards Matter

- The goal is to ensure Florida's students graduate high school ready for success in college, career and life.
- In order to prepare our students for success and make them competitive in the global workplace, we must provide them with a set of clear, consistent and strong academic standards.



- The Florida Standards will equip our students with the knowledge and skills they need to be ready for careers and college-level coursework.
- Having the best and highest academic standards for our students today will prepare them for the jobs of tomorrow.

The English Language Arts ASSESSMENT Consists of:

1. Building Reading Skills to improve Knowledge in the different subjects

3. Answering Text-based Questions with evidence support

5. Developing proper grammar conventions

2. Developing critical thinking with more complex texts

4. Writing an Informative or Argumentative essay based on information from multiple sources

6. Enriching the knowledge and use of academic vocabulary

The English Language Arts Sample Test Questions

8 Even though 249516 Aretha was first detected in 2001, it was not formally designated an asteroid until February 2010. To determine if a space rock is indeed an asteroid, astronomers must observe it dozens of times to figure out its orbit and other properties. After that, discoverers like Mainzer are free to submit potential names to the Minor Planet Center, the global organization that collects observational data for all known and suspected asteroids and comets. The names are then judged and chosen by a 15-person committee at the International Astronomical Union.

9 249516 Aretha measures two to three kilometers, or less than two miles, across. It orbits between Mars and Jupiter, one of hundreds of thousands of known asteroids that reside between the two planets. It takes about five and a half years to make one trip around the sun. . . .

10 In 2007, on the 40th anniversary of the release of "Respect," an NPR segment declared that the record had "arrived with an impact of an asteroid." What a suitable metaphor, when you leave the dinosaurs out of it. Aretha Franklin was a force, in music and beyond, in the cultural and social movements for which her lyrics provided the soundtrack. She completely shook the landscape, fusing gospel, blues, and pop in a way no one had ever done before—and hasn't since.

Excerpt from "How Aretha Franklin's Legacy Extends into Outer Space" by Marina Koren. Copyright © 2018 by Atlantic Media, Inc. Reprinted by permission of The Atlantic Monthly Group LLC via Copyright Clearance Center.

Notes Line Reader Zoom Out Zoom In

1 2 3 4 5 6

4

GUEST, GUEST

What does the phrase "arrived with an impact of an asteroid" in paragraph 10 suggest?

Ⓐ New scientific discoveries are often connected to musicians.

Ⓑ The success that Franklin achieved was artistically significant.

Ⓒ Revolutionary change within music can be destructive to society.

Ⓓ It was inevitable that scientists would name a discovery after Franklin.

The English Language Arts Sample Test Questions

The screenshot displays a digital test interface. At the top, there are navigation icons: Back, Next, Save, and Pause. On the right side, there are icons for Notes, Line Reader, Zoom Out, and Zoom In. Below these icons is a progress bar with six numbered boxes (1-6). Box 1 has a green checkmark, and box 3 is highlighted in blue. The main content area is split into two columns. The left column contains a reading passage titled "How Aretha Franklin's Legacy Extends into Outer Space" by Marina Koren. The right column contains a question labeled "3" and four multiple-choice options (A, B, C, D). The question asks how paragraph 7 develops the author's purpose of celebrating a range of individuals' accomplishments.

How Aretha Franklin's Legacy Extends into Outer Space
by Marina Koren

1 In 2001, Aretha Franklin took the stage at Radio City Music Hall in New York City. She wore a bleach-white jumpsuit and feather boa, her hair teased up in her trademark style, glossy as obsidian. A guitar twanged over the cheers of a packed house. "What is that, Teddy?" Franklin said, addressing her son, the evening's guitarist. "Play that riff again. We all know that, don't we?" They did, and as the Queen of Soul broke into "Chain of Fools," the crowd rose to their feet and clapped their hands sore.

2 Several months later, a telescope in Mexico City spotted a tiny pinprick of light in the sky during its nightly observations.

3 These events, of course, had nothing to do with each other. But their stories would align nearly 15 years later. The point of light turned out to be an asteroid, and astronomers decided to name it for the singer: 249516 Aretha.

4 To have an asteroid named after you is an honor, but Franklin . . . already had plenty of those. The legendary singer had accumulated, over a career spanning five decades, more than 100 singles on the *Billboard* charts, 18 Grammy Awards, and numerous other accolades. The state of Michigan, where Franklin grew up, had her voice designated a "natural resource." That voice was powerful, velvety, unmatched. When Franklin asked the crowd to sing along

3
GUEST, GUEST

How does paragraph 7 develop the author's purpose of celebrating a range of individuals' accomplishments?

Ⓐ by describing Mainzer's criteria for naming an asteroid after someone

Ⓑ by justifying why scientists like Mainzer name asteroids after someone

Ⓒ by establishing Mainzer's scientific qualifications that allow her to name asteroids

Ⓓ by explaining how Mainzer collaborates with another scientist when naming asteroids

The English Language Arts Sample Test Questions

The screenshot shows a digital test interface. At the top, there are navigation icons: Back, Next, Save, and Pause. On the right, there are icons for Notes and Line Reader. Below the navigation is a progress bar with five numbered boxes; the first box is checked, and the fifth box is highlighted in blue. The main content area is split into two columns. The left column contains a reading passage titled "How Aretha Franklin's Legacy Extends into Outer Space" by Marina Koren. The right column contains a question labeled "5" for "GUEST, GUEST". The question asks for two ways the author supports the argument that Franklin is an important figure who should be recognized. There are five multiple-choice options, each with an unchecked radio button.

How Aretha Franklin's Legacy Extends into Outer Space

by Marina Koren

1 In 2001, Aretha Franklin took the stage at Radio City Music Hall in New York City. She wore a bleach-white jumpsuit and feather boa, her hair teased up in her trademark style, glossy as obsidian. A guitar twanged over the cheers of a packed house. "What is that, Teddy?" Franklin said, addressing her son, the evening's guitarist. "Play that riff again. We all know that, don't we?" They did, and as the Queen of Soul broke into "Chain of Fools," the crowd rose to their feet and clapped their hands sore.

2 Several months later, a telescope in Mexico City spotted a tiny pinprick of light in the sky during its nightly observations.

3 These events, of course, had nothing to do with each other. But their stories would align nearly 15 years later. The point of light turned out to be an asteroid, and astronomers decided to name it for the singer: 249516 Aretha.

4 To have an asteroid named after you is an honor, but Franklin . . . already had plenty of those. The legendary singer had accumulated, over a career spanning five decades, more than 100 singles on the *Billboard* charts, 18 Grammy Awards, and numerous other accolades. The state of Michigan, where Franklin grew up, had her voice designated a "natural resource." That voice was powerful, velvety, unmatched. When Franklin asked the crowd to sing along

5

GUEST, GUEST

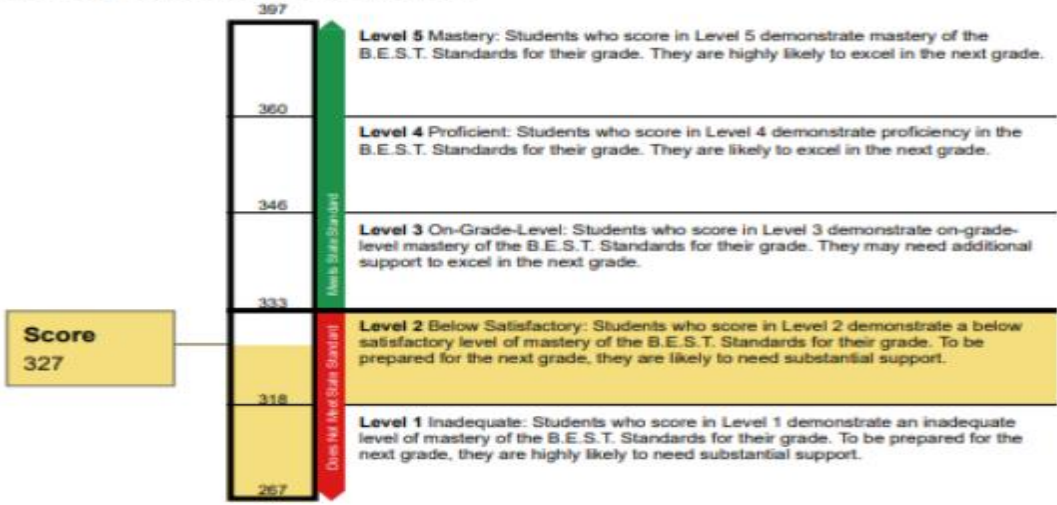
Select **two** ways the author supports the argument that Franklin is an important figure who should be recognized.

- by listing her many musical achievements
- by naming the genres that inspired her music
- by listing all the women asteroids have been named for
- by explaining the facts about the asteroid named after her
- by providing examples of ways people respond to her as a performer

Student Score Report

Scale Score: 327 Achievement Level: Level 2 Percentile Rank: n/a

How Did Your Student Do on the Test?



Please note, for the 2022-2023 school year only, student achievement levels are provisional, and are linked to the 2021-2022 reporting scale, as required by Florida law. For 2023-2024 and beyond, scores will be reported on a new scale after the State Board of Education adopts new student achievement expectations in fall of 2023.

Percentile rank will be reported after the PM window closes. This rank will indicate where your student's performance falls compared to all other students who took the same test in this window.

Please visit the FAST Portal at www.ffast.org to access additional information and resources, including a Parent Quick Guide that explains each element of this report and what it means for your student.

Students who scored a Level 1 or Level 2 may be eligible to receive free books on a monthly basis through the New Worlds Reading Initiative. Visit <http://newworldsreading.com> for more information.

Students who scored a Level 1 or Level 2 may be eligible for a \$500 reading scholarship to be used for instructional materials, tutoring, and summer or after school educational programs. Visit <http://Stepupforstudents.org/reading> for more information.

How Did Your Student Perform on Different Areas of the Test?

Below the Standard At/Near the Standard Above the Standard

Category	Achievement Level	Achievement Level Description
Reading Across Genres & Vocabulary		The student performance is at/near the standard.
Reading Informational Text		The student performance is at/near the standard.
Reading Prose and Poetry		The student performance is at/near the standard.

THIS TEST IS ADMINISTERED THREE TIMES DURING THE YEAR AND THE STUDENTS ARE SUPPOSED TO DEMONSTRATE INCREASING PROGRESS IN THE MASTERY OF THE

The Mathematics ASSESSMENT Consists of:

Number Sense,
Operations and
Probability

Geometric
Reasoning

Algebraic
Reasoning

Expressions
functions and data
analysis

Linear and Non-
linear relationships,
Data Analysis and
Functions

Logic,
Relationships and
Theorems.

Congruence,
Similarity and
Constructions

Measurement and
coordinate
Geometry

Mathematics Sample Test Questions

An expression is shown.

$$\left(\frac{-1}{2}\right)^3 + \sqrt{8^2 - 15}$$

What is the value of the expression?

Ⓐ $6\frac{7}{8}$

Ⓑ $7\frac{1}{8}$

Ⓒ $48\frac{7}{8}$

Ⓓ $49\frac{1}{8}$

Mathematics Sample Test Questions

6

GUEST, GUEST



Select the boxes to identify the number of solutions to each equation.

	No Solutions	One Solution	Infinitely Many Solutions
$3x - 5 = 3(x - 2) + 1$	<input type="checkbox"/>	<input type="checkbox"/>	<input type="checkbox"/>
$3x - 5 = -9x + 15$	<input type="checkbox"/>	<input type="checkbox"/>	<input type="checkbox"/>
$3x - 5 = 3x + 10$	<input type="checkbox"/>	<input type="checkbox"/>	<input type="checkbox"/>

Mathematics Sample Test Questions

7

GUEST, GUEST



A table of values of a linear relationship is shown.

x	0	1	2
y	15	12	9

Create an equation to represent the relationship.

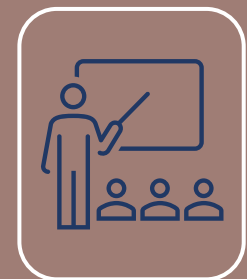
The calculator interface includes a grid of buttons for numbers 1-9, 0, and a decimal point. It also features buttons for variables x and y , arithmetic operators (+, -, \cdot , \div), comparison operators (<, \leq , =, \geq , >), and mathematical functions (power, parentheses, absolute value, square root, nth root, and π). Navigation buttons (left, right, undo, redo, and clear) are located above the grid.

DATES

PM3
ELA and Math
May 1 to June
3

MYA
Algebra 1
Geometry
February 1 -3

EOC
Algebra 1
May 1 - 26



How can I help my child succeed ?

- **Make sure they are turning in classwork and homework**
- **Reading Tutoring available for ESOL students Monday -Thursday 7:20 a.m. - 8:20 a.m.**
- **Math Tutoring available Monday-Thursday 7:20 a.m. - 8:20 a.m.**
- **i-Ready**
- **IXL**

❑ ALL students are required to complete at least 45 minutes of I-Ready, every week for BOTH Reading and Math. Students must complete two lessons every week.

❑ Their diagnostic scores will improve if they complete their I-Ready lessons, with passing scores of 70% or higher.

❑ I-Ready incentives are awarded to students who meet this criteria in order to motivate them to keep working hard on their teacher-assigned and MY PATH lessons.



8th Grade Activities

- **How to become a volunteer**
- **OSP – Online payment for field trips**
- **Field Trips**
- **8th Grade Promotional Ceremony**