

SECOND GRADE PARENT NIGHT

John I. Smith K-8 Center
March 12, 2024

Welcome Parents



This presentation includes:

- Finish Line to the FAST
- Finish Second Grade Strong
- Getting Ready for Third-Grade
- End-of-Year School Activities
- Parent Climate Survey

Finish Line to the FAST

On your child's desk you have:



Student Data Folder



FAST Parent
Report

FAST Star Family
Report



iReady Scores



- The Grade 2 Florida Assessment of Student Thinking (F.A.S.T.) Assessment is aligned to the NEW B.E.S.T. standards in BOTH Reading and Math.
- New Reading and Math books have been aligned to these standards and students have been gaining more understanding and knowledge of NEW terminology and question styles. For Reading, through their bi-weekly FRESH READS in class (BOTH paper/pencil and online).
- The F.A.S.T. Assessment is computer adaptive- which means questions will become harder as students successfully answer questions. And, become easier, if questions are answered incorrectly. This will result in higher or lower levels.
- Teachers will notify you of your child's level, as soon as we have access to the reports.
- Results for the FINAL F.A.S.T. Assessment are expected to arrive before the end of the school year.

Who is tested?

- FAST Grades K-2
- All students enrolled in grades K-2, including:
 - SPED/Section 504
 - ELL
 - Hospital/Homebound
 - Full-time virtual program students



Miami-Dade Testing Windows

Grade Level	PM 1	PM 2	PM3
K -2	August 21 – September 29	December 4 – January 26	April 15 – May 31

Session Lengths:

All FAST assessments are administered in one session in one day, and it is recommended that students only take one subject test per day. Students may be assigned extended time as needed, or if indicated on their Individual Education Plan (IEP) or Section 504 Plan.

RENAISSANCE **Star Reading**[®]


Grade 2 in Florida

- Items test skills in five key reading domains
- 34 items
- 20 minutes average test length



What does Star Reading assess?

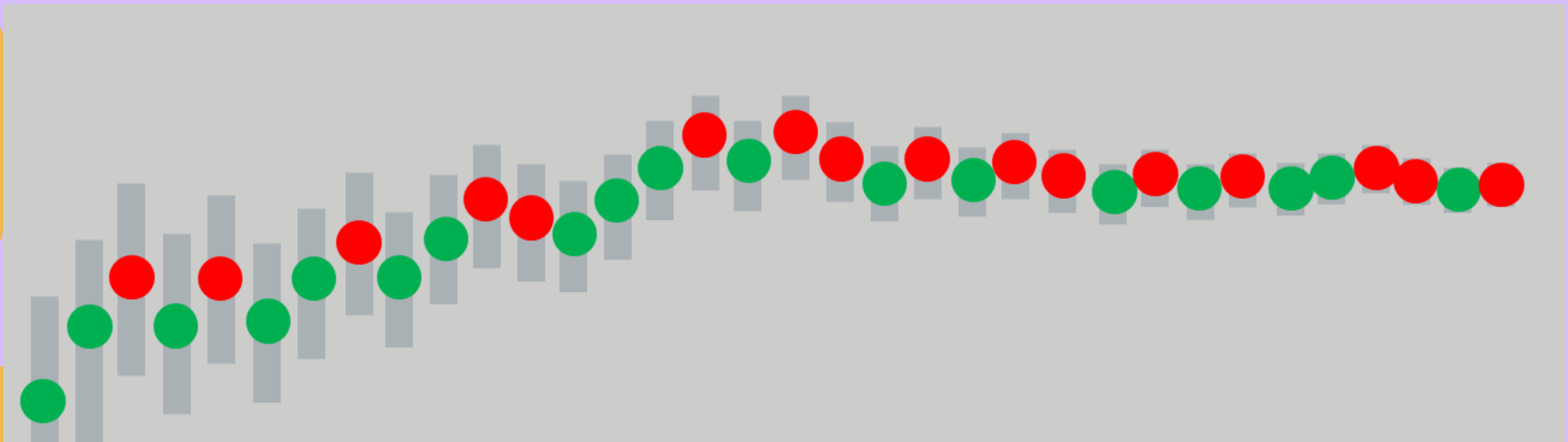
5-Key Reading Domains

- Word Knowledge and Skills
 - Comprehension Strategies and Constructing Meaning
 - Analyzing Literary Text
 - Understanding Author's Craft
 - Analyzing Argument and Evaluating Text
- 
- A large, abstract yellow graphic on the left side of the slide, resembling a stylized hand or a series of overlapping shapes.

Design – Computer Adaptive Test

Items answered by student

● Correct Response ● Incorrect Response





STAR READING

Samples of Questions

You can do fun things when you go to the ocean. You can swim in the ocean. You might play in the sand. You can also look for shells.

What is this mostly about?

- 1 swimming in the ocean
- 2 toys to bring to the ocean
- 3 fun things to do at the ocean

Next

Florida B.E.S.T. Benchmark

ELA.2.R.2.2– Identify the central idea and relevant details in a text.

It takes many people to make a book. Some write the words. Some make sure all the words are right. Other people draw or take pictures for the book.

Why did the author write this?

- 1 to show some of the jobs people do to make books
- 2 to help people pick which books to buy
- 3 to tell people why reading books is a good idea

Next

Florida B.E.S.T. Benchmark

ELA.2.R.2.3– Explain an author’s purpose in an informational text.

Rosa didn't know how to ride her new bike. She would fall over when she got on. Rosa kept trying again and again. Then one day she was able to ride down the street!

What lesson does this story tell?

- 1 Never give up.
- 2 Always be careful.
- 3 Be thankful for things.

Next

Florida B.E.S.T. Benchmark

ELA.2.R.1.2– Identify and explain a theme of a literary text.

Mrs. Logan loves her job helping animals. She helps sick animals get better. She also likes to teach other people to help animals.

Which word tells about Mrs. Logan?

- 1 sad
- 2 fast
- 3 kind

Next

Florida B.E.S.T. Benchmark

ELA.2.R.1.1– Identify plot structure and describe main story elements in a literary text.

RENAISSANCE **Star Math**[®]



- Items test skills in four broad Mathematics domains
- 34 items
- 30-minute average test length

Grade 2 in Florida

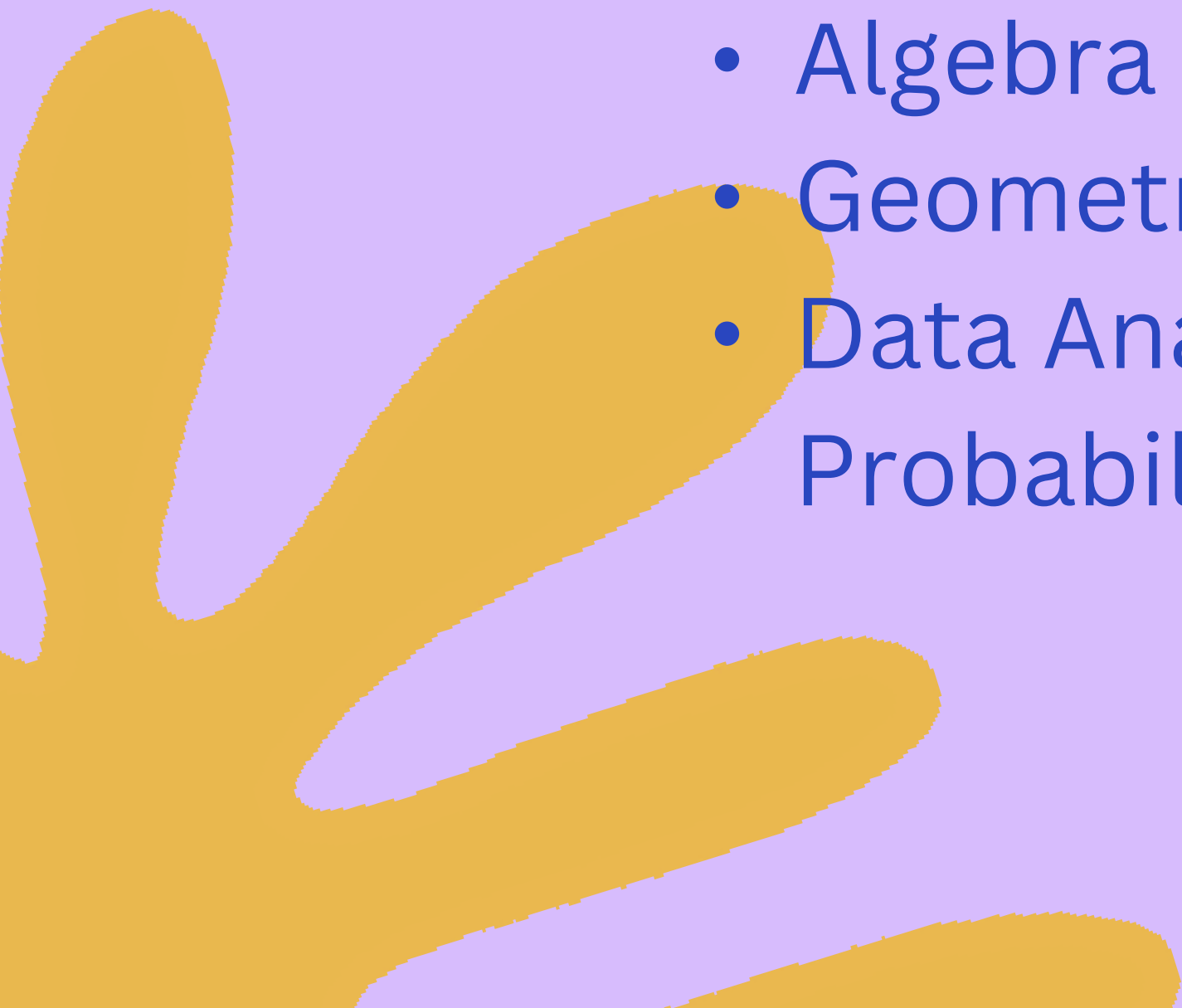
- Headphones are required
- Audio has been enabled for all K-2

Scratch paper is required

What does Star Math assess?

4-Broad Mathematics Domains

- Numbers and Operations
- Algebra
- Geometry & Measurement
- Data Analysis, Statistics & Probability





STAR MATH

Samples of Questions

4 hundreds + 2 tens + 8 ones = _____

A 248

B 428

C 842

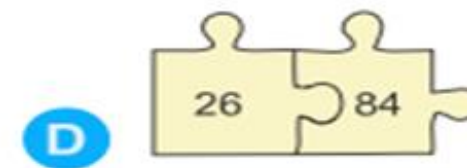
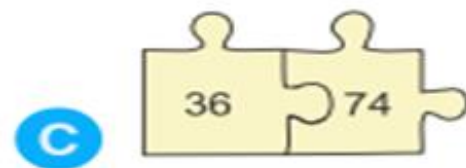
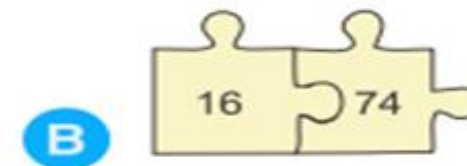
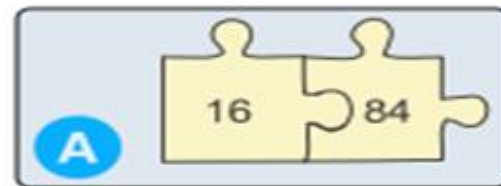
D 482

Next

Florida B.E.S.T. Benchmark

MA.2.NSO.1.2– Compose and decompose three-digit numbers in multiple ways using hundreds, tens and ones. Demonstrate each composition or decomposition with objects, drawings and expressions or equations.

Which pair of numbers has a sum of 100?



Next

Florida B.E.S.T. Benchmark

MA.2.NSO.2.3– Add two whole numbers with sums up to 100 with procedural reliability. Subtract a whole number from a whole number, each no larger than 100, with procedural reliability.

What time does the clock show?



A 4:05

B 1:20

C 4:10

D 3:05

Next

Florida B.E.S.T. Benchmark

MA.2.M.2.1– Using analog and digital clocks, tell and write time to the nearest five minutes using a.m. and p.m. appropriately. Express portions of an hour using the fractional terms half an hour, half past, quarter of an hour, quarter after and quarter till.

Peter and Henry went to the library. They brought home many books.

Number of Books	
Peter	
Henry	

How many **fewer** books did Henry bring home?

- A 5 fewer books
- B 4 fewer books
- C 9 fewer books

Next

Florida B.E.S.T. Benchmark

MA.2.DP.1.2– Interpret data represented with tally marks, tables, pictographs or bar graphs including solving addition and subtraction problems.



SCORES

RENAISSANCE[®]

Parent Report for John Dennison

Generated May 11, 2022, 2:50 PM

School	Teacher	Class	Grade	Test Date
A Renaissance Data Elementary School	Literacy, E.	1st Grade	1st	Apr 5, 2022 9:08am

Dear Parent or Guardian of John Dennison:

John has taken a Star Early Literacy assessment on the computer. Star Early Literacy measures your child's proficiency in up to nine areas that are important in reading development. As with any assessment, many factors can affect your child's scores. It is important to understand that these scores provide only one picture of how your child is doing in school.



870

Scaled Score

The Scaled Score is your child's overall score, calculated based on both the difficulty of the questions and the number of correct responses. Scaled Scores in Star Early Literacy in the Unified scale range from 200 to 1100 and span the grades Pre-K through 3.

69

Percentile Rank

John's skills are higher than 69% of students nationally in the same grade. This score is at average. The PR Range indicates that, if John had taken the Star Early Literacy test many times, most of his/her scores would likely have been between 48 - 83.

BR190L - BR40L
Lexile[®] Range

The Lexile[®] Range spans reading levels that are appropriately challenging for reading practice. John should be selecting books in this range for optimal growth in reading. This range is approximate. Success at any reading level depends on your child's interest and prior knowledge of a book's content.

Scaled Scores relate to four developmental stages: Early Emergent Reader (200 - 682), Late Emergent Reader (683 - 785), Transitional Reader (786 - 851), and Probable Reader (852 - 1100). A Scaled Score of 870 means that John is at the Probable Reader stage.

Children at the Probable Reader stage are becoming proficient at recognizing many words, both in and out of context. They spend less time identifying and sounding out words and more time understanding what they have read. They can blend sounds and word parts to read words and sentences more quickly, smoothly, and independently.

John is using more complex strategies to decode words and access the meaning of grade-appropriate text. He/She understands that many grade-level words can have similar or opposite meanings. He/She understands that words have different functions. He/She is increasingly able to select books that interest him/her, to monitor his/her own reading, and to self-correct as needed. John is probably able to locate key details in text to answer literal and inferential questions. Also, he/she is probably able to read aloud some easy texts with accuracy, fluency, and expression.

You can encourage your child's growth in reading skills by providing opportunities to read and discuss a variety of books at home. John would also benefit from fun activities, such as playing word games or asking questions that require voicing an opinion or idea.

I will be using these Star Early Literacy test scores to help John further develop his/her early literacy skills for early literacy practice at school. If you have any questions about your child's scores or these recommendations, please contact me at your convenience.

Teacher Signature

Date

Parent Signature

Date

Additional comments may be added on the back of this sheet

Interpreting Scores

Star Early Literacy and Star Reading Concordance Table										
	Level 1		Level 2		Level 3		Level 4		Level 5	
	Unified	FAST	Unified	FAST	Unified	FAST	Unified	FAST	Unified	FAST
Grade K	Below 729	Below 114	729-787	114-133	788-825	134-146	826-869	147-161	At/Above 870	At/Above 162
Grade 1	Below 791	Below 135	791-843	135-152	844-893	153-169	894-946	170-187	At/Above 947	At/Above 188
Grade 2	Below 882	Below 166	882-931	166-182	932-970	183-195	971-1014	196-210	At/Above 1015	At/Above 211

Star Math Concordance Table										
	Level 1		Level 2		Level 3		Level 4		Level 5	
	Unified	FAST	Unified	FAST	Unified	FAST	Unified	FAST	Unified	FAST
Grade K	Below 751	Below 101	751-793	101-118	794-827	119-132	828-861	133-146	At/Above 862	At/Above 147
Grade 1	Below 821	Below 130	821-861	130-146	862-893	147-159	894-922	160-171	At/Above 923	At/Above 172
Grade 2	Below 889	Below 158	889-919	158-170	920-953	171-184	954-992	185-200	At/Above 993	At/Above 201

Finish Second Grade Strong

Here are some tips to finish the year strong



Attendance

- Absences/Tardies
- SCAM/Referral



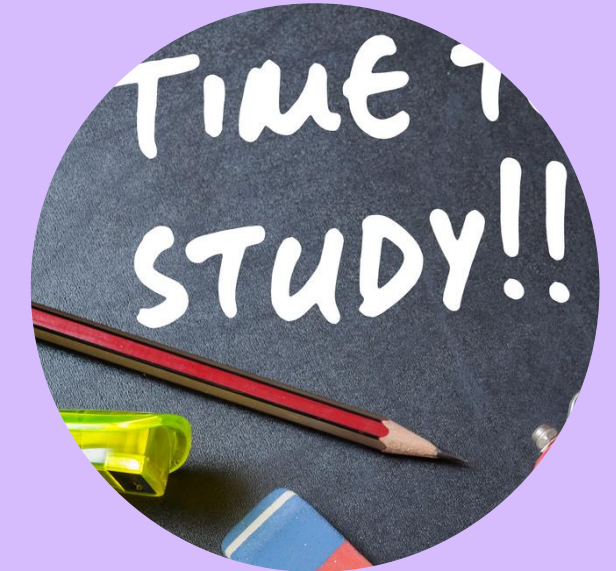
Science



Homework



iReady/Imagine Learning and Reflex



Study Habits

Attendance

Attendance is **IMPORTANT!**

Students who attend school regularly have been shown to achieve at higher levels than students who do not have regular attendance.

WE NEED YOUR SUPPORT!!!!!!

School begins at 8:35-3:05 pm M,T,R,F
8:35-1:50 Wednesdays



iReady

- ALL students are required to complete at least 45 minutes of i-Ready, every week, for BOTH Reading and Math.
- Their diagnostic scores will improve if they complete their I-Ready lessons, with passing scores of 70% or higher.
- I-Ready incentives are awarded to students who meet this criteria in order to motivate them to keep working hard on their teacher-assigned and MY PATH lessons.



Imagine Learning

- Imagine Learning should be completed by all ESOL 1 students at least 3 times a week, for 20 minutes each session. A total of 60 min. Weekly.
- This program will help ESOL students learn and practice more of the English language in an interactive and fun way.
- Imagine Learning incentives will be awarded to students who are meeting the criteria, by their ESOL teachers.



Reflex

ALL students are **required** to complete at least three green lights per week in Reflex Math found in your child's portal.

Recommended:

Shorter, more frequent sessions are more effective than longer, less frequent sessions. For example, a student who uses Reflex 5 times/week for 15 minutes will likely become fluent more quickly than a student who uses Reflex twice a week for 45 minutes.

Getting Ready for Third Grade

Here are some tips for third grade:



Third Grade Retention

- Portfolio
- iReady Score
- FAST Level 2 or Above

Multiplication Facts

- ## Reading Comprehension
- Text Evidence
 - Cite Sources

Attendance

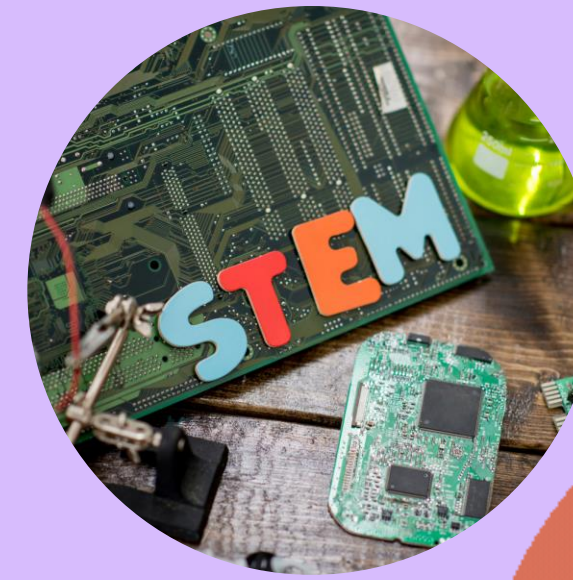
End of Year Activities



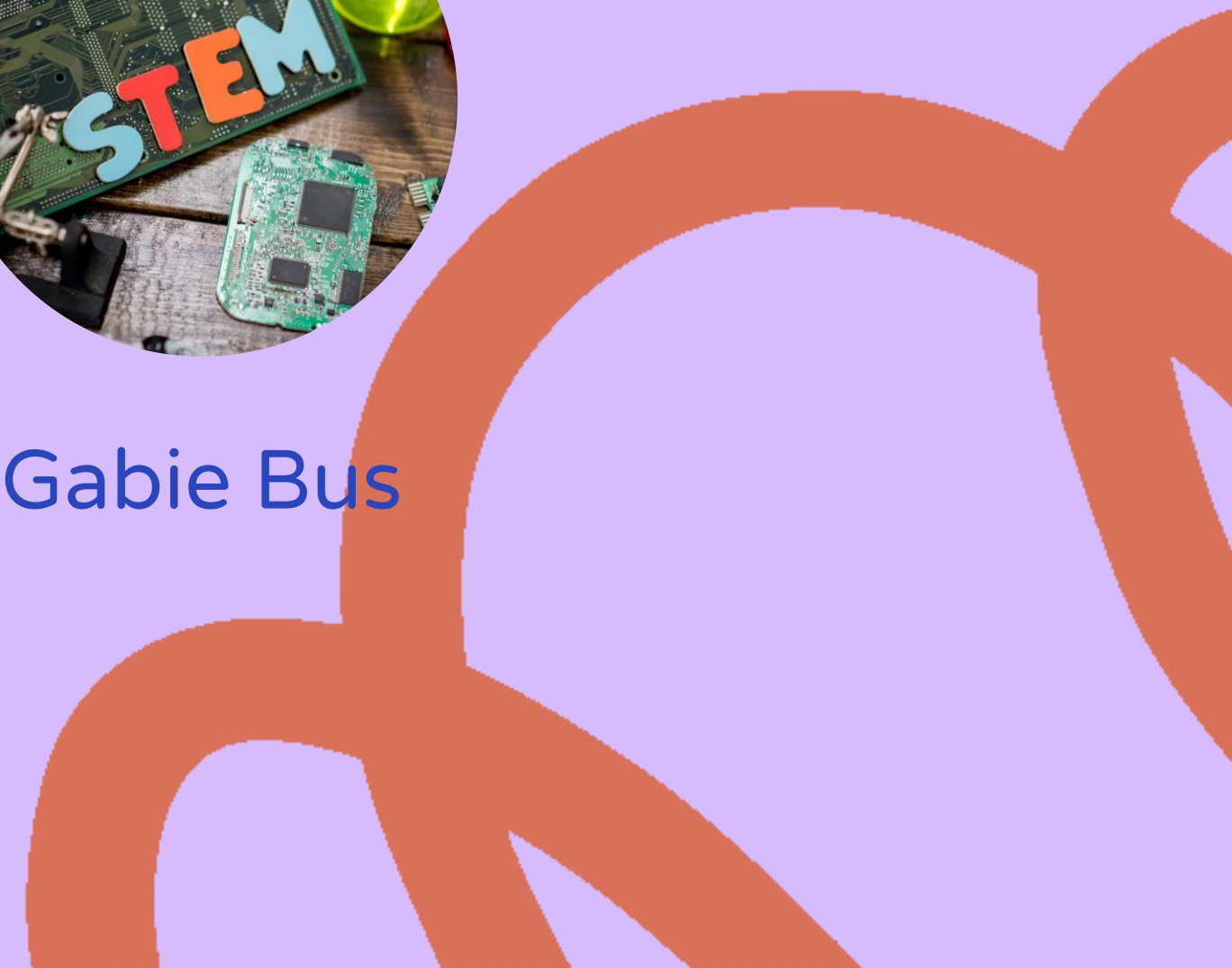
Ice Cream Party
for iReady
Growth



Luau



GABIE BUS



Parent Climate Survey

ENGLISH



SCHOOL CLIMATE SURVEY

Take the survey and be heard today!

DUE MAY 10, 2024

<https://drs2.dadeschools.net>
Go to our website and click "Take Survey"



The poster features a group of diverse students smiling, with a circular logo for Dade County Public Schools in the top left corner of the image. The logo contains the text "DADE COUNTY PUBLIC SCHOOLS" and "Empowering our students. Inspiring the world."

Parent Climate Survey

SPANISH

ENCUESTA DEL AMBIENTE ESCOLAR

Responda la
encuesta
¡Sea escuchado hoy!

VENCE EL 10 DE MAYO DE 2024



<https://drs2.dadeschools.net>
Visite nuestro sitio web y haga clic en
"Tomar Encuesta"





ClassDojo

Q & A

We ask that you please send your child's teacher any questions or concerns regarding tonight's presentation through your Class Dojo app. Teachers will schedule parent-teacher conferences, as needed, to address your questions/concerns.

Thank you for coming today!
The 2nd Grade Teachers